

Emma Berry  
and Liv Moriarty  
*Lean back, pass forward*

# B

Bus Projects is supported by the Victorian Government through Creative Victoria. Bus Projects' 2017-19 Program is supported by the City of Yarra.

Bus Projects acknowledges the traditional custodians of the land on which we operate: the Wurundjeri people and Elders past and present of the Kulin nations.

**CREATIVE  
VICTORIA**



# S

Emma Berry  
and Liv Moriarty  
*Lean back, pass  
forward*

02.10.19–26.10.19

*Send something back*  
Viva Hall

*Remember to email*  
*Written on the back of a hand*  
*Stay warm, stay close*  
*A snack*  
*Now back home, respectively*

*A dance that has no music*

*One walks, one drives*  
*One, two*  
*Forward, back*  
*week 8*  
*across 8 suburbs*  
*Pass it here*  
*Parlay*  
*Pasta for dinner*

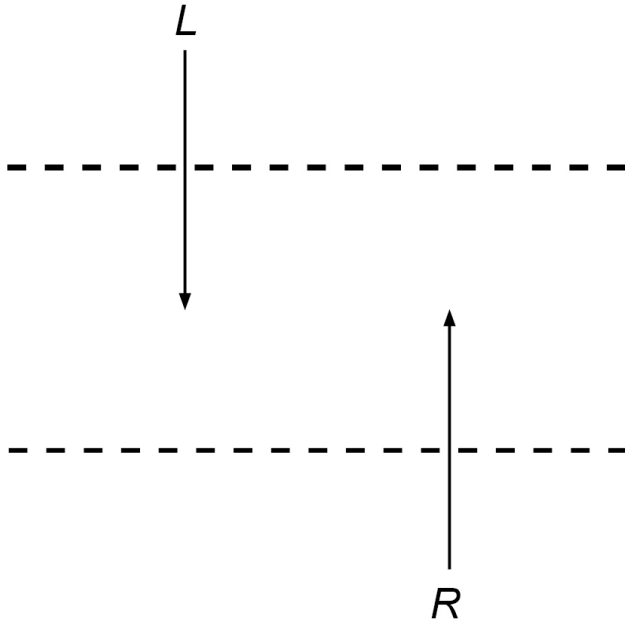
*Put it under the couch*  
*And leave a note*

*I'll get it tomorrow*

Google docs and email exchanges are the foundations on which their project sits; it is the glue that binds the work together. A communal studio lives between their two computers, somewhere on a memory bank. Data is physical, there is a server that holds it all, reaffirming your existence it sits in a secret location in NSW. There is an archive of your life, your evolution, the rise and fall of friendships. The web carries your message to someone, they receive it, send something back, moored by the lines that connect as you read what the other has said.

There is an intimacy in digital space, in the reaching/leaning across to each other. Turn-taking and the overlapping of conversation. The leading and following and the give and take of reciprocal collaboration. A dance mat lies on the floor, mapping a relationship, materialising the digital space.

Closeness is both emotional and physical. *Distance* may seem lonely, but it is also an important ingredient for a well-rounded kinship. *Distance* is also embodied, as we each head home after meeting for a Monday morning coffee. The back and forth, like the game of paddocks, strengthens a link, both digitally and emotionally. With each new word, their shared data grows.



*re: sawing a bench*



**Liv Moriarty** and **Emma Berry** don't like making work alone, so they make it together. Foregrounding their lived experiences, work often manifests itself in emails, shared google docs and coffee breaks. Their collaborative projects have also been exhibited at Blindside ARI and Trocadero Art Space, with an upcoming show at c3 Contemporary Art Space in 2020.

**B**

**U**

Bus Projects  
25-31 Rokeby Street,  
Collingwood,  
VIC 3066 Australia.  
*[busprojects.org.au/](http://busprojects.org.au/)*

**S**

**PROJECTS**